

**Number of participants in the Baseline, Assessment 1 & number of participants retained**

Baseline Assessment (phase 1)	Assessment 1(phase 2)- No.of participants retained	No. of participants discontinued
52	39	13

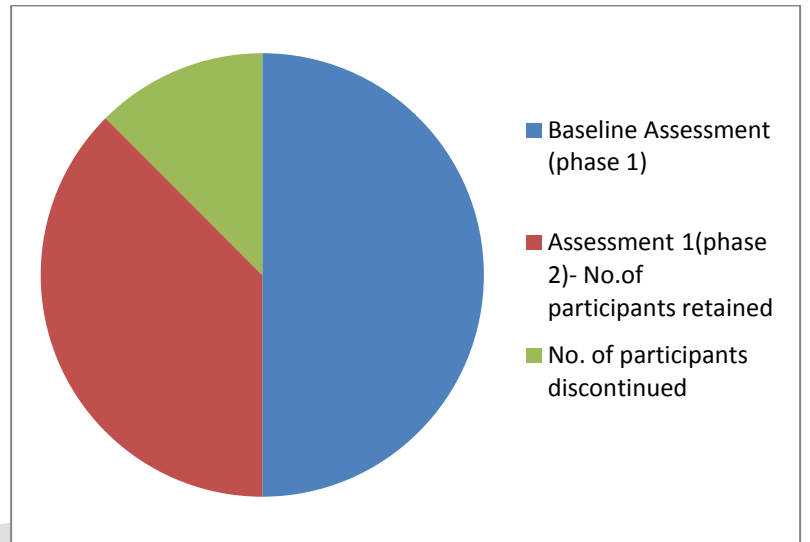


Figure 1

**Comparison of Maladaptive Behavior Levels in Baseline & Assessment 1**

MALADAPTIVE BEHAVIOUR INDEX LEVEL			
	Average	Elevated	Clinical Significant
PRE	10	28	1
POST	33	6	0

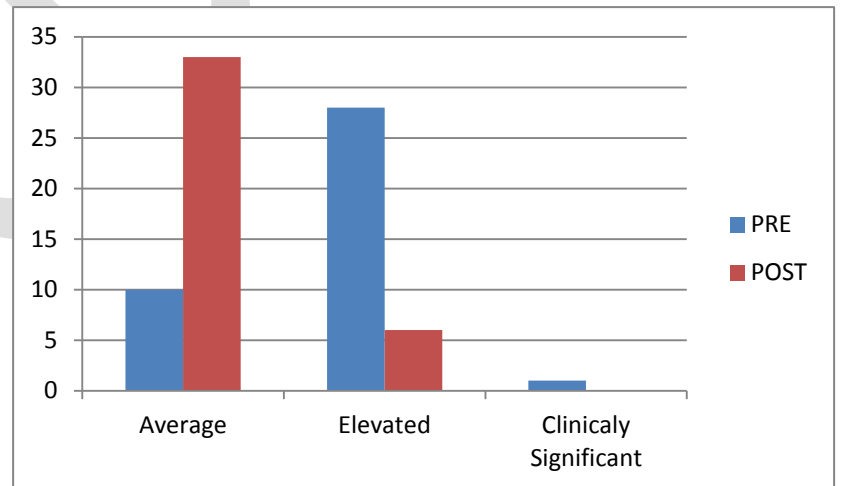


Figure 2

**Percentage of Improvement in the domains of Adaptive Behavior**

Domain	% of Improvement
Communication	25.64
Daily Living Skills	15.38
Socialization	30.76
Motor Skills	25.64
Adaptive behaviour composite level	17.94
Maladaptive behaviour index level	17.94

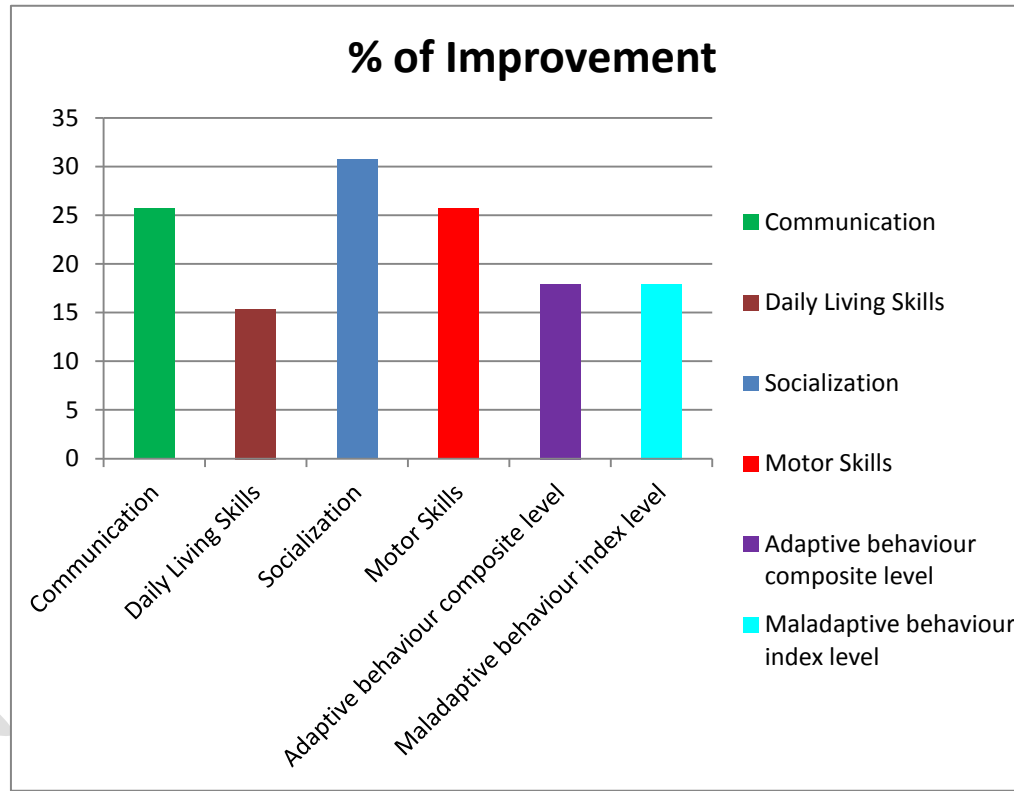


Figure 3

**Comparison of rate of change in the Domains of Adaptive Behavior & Maladaptive Behavior**

Domain	% of Improvement	% of deterioration	% of cases maintaining baseline status
Communication	25.64	2.56	71.79
Daily Living Skills	15.38	7.69	76.92
Socialization	30.76	5.12	64.1
Motor Skills	25.64	10.25	64.1
Adaptive behaviour composite level	17.94	0	82.2
Maladaptive behaviour index level	17.94	2.56	79.48

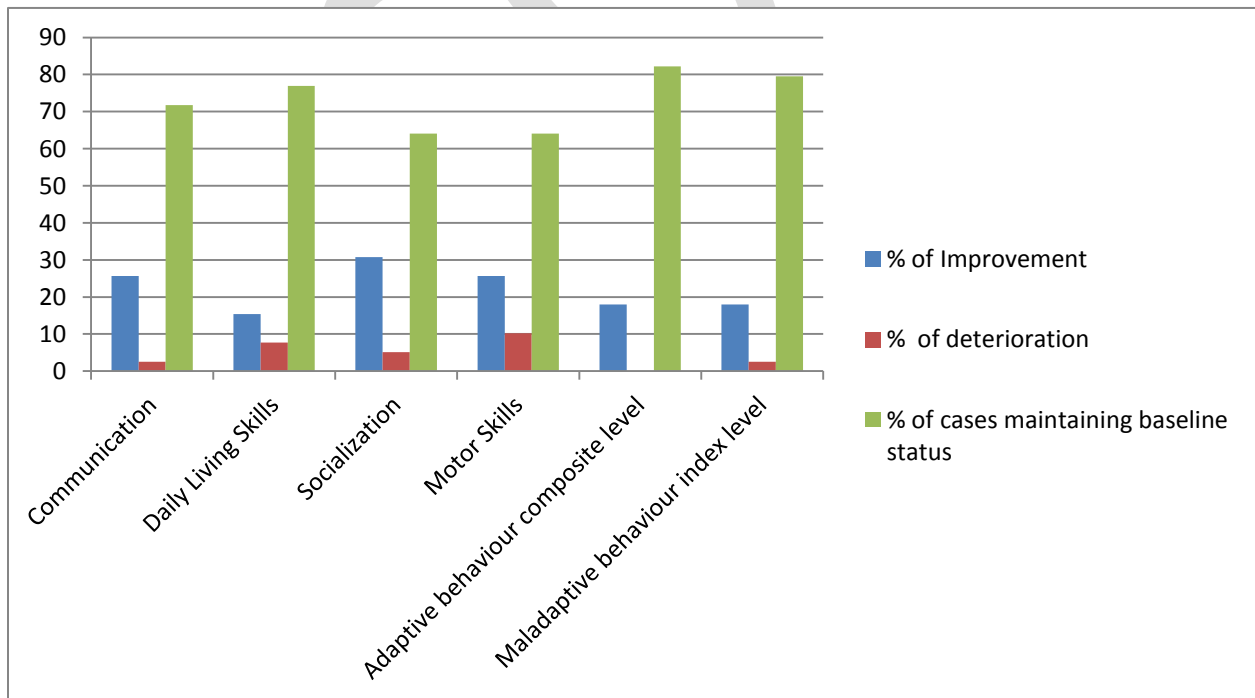


Figure 4